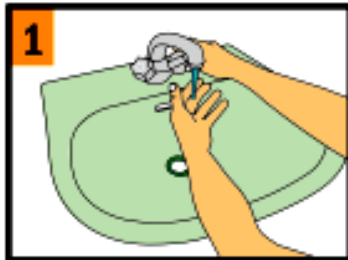


Employees must wash hands before returning to work

Hand Washing Instructions



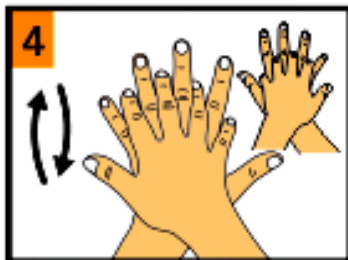
Wet your hands with clean, running water



Apply soap generously



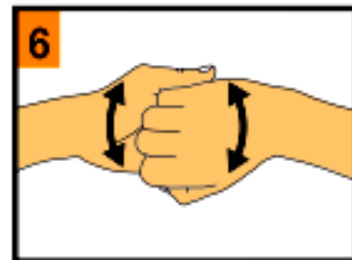
Lather up! Rub soap on palms in circular motion



Rub soap on back of both hands



Rub soap between fingers



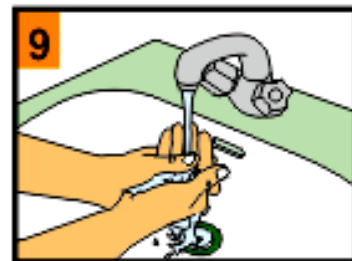
Rub soap on fingertips by interlocking them



Apply soap on both thumbs and rub it in half circles



Rub fingertips on palms



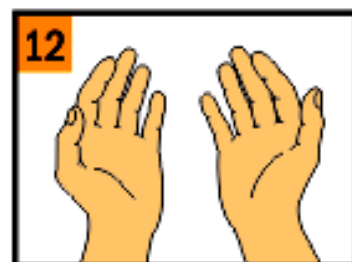
Rinse hands thoroughly



Wipe hands with clean, dry paper-towel



Use paper-towel to turn off the faucet



Admire your germ-free hands!